



Arch. Stefano Boeri & OM/AR arch. - Ph. Paolo Rosselli

EQUITONE®

Fibre cement facade materials

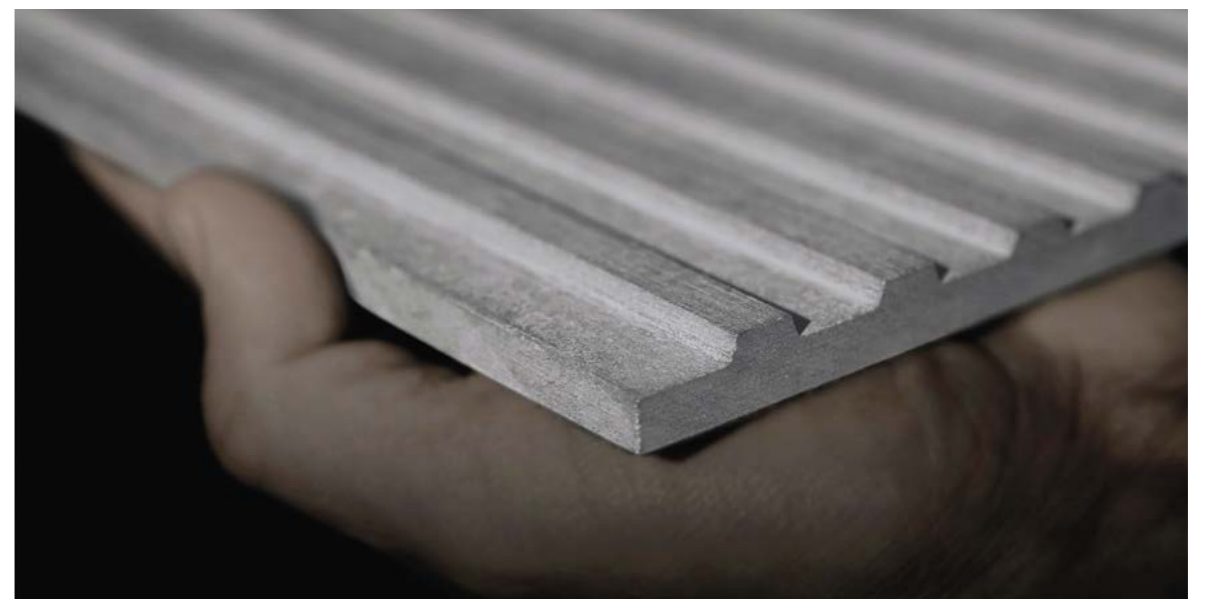


EQUITONE fibre cement facade materials

When Ludwig Hatschek invented fibre cement in the late 19th century, he combined the basic elements of the earth: mineral materials, water, air and fire (heat) in a simple filtration process. Our mother company, Etex, has been manufacturing fibre cement materials since 1905. The most prestigious incarnation in this proud heritage of unique materials is the EQUITONE® facade material range. The Hatschek production process makes each panel unique with an individual fibre cement texture. Most EQUITONE facade materials are through-coloured with a raw, unfinished character.

In the 1950s leading architects such as Walter Gropius pioneered the use of coated fibre cement panels using the ventilated facade (rainscreen) system. Designer Willy Guhl created the famous "loop chair" from a single piece of fibre cement in 1954. This design still bears witness to the core qualities of the fibre cement base material: thin, light, durable and beautiful. In 1987, Herzog & De Meuron designed the Ricola storage building in Laufen using uncoated fibre cement panels. The resulting shutter facade, which is a reference to the cardboard boxes inside, inspired our company to start the industrial development of raw untreated fibre cement materials.

Today, EQUITONE materials offer a palette of possibilities. Leading architects of our time are exploring and transforming the EQUITONE materials in remarkable facade designs.



Giving material a second life

Our 2030 ambitions

At EQUITONE, we dedicate ourselves to reuse and recycle all our materials, giving them a second life. With your help, we want to take it one step further and rethink the way they are designed and used, reducing our natural resource consumption and cutting out waste.

Light-impact materials

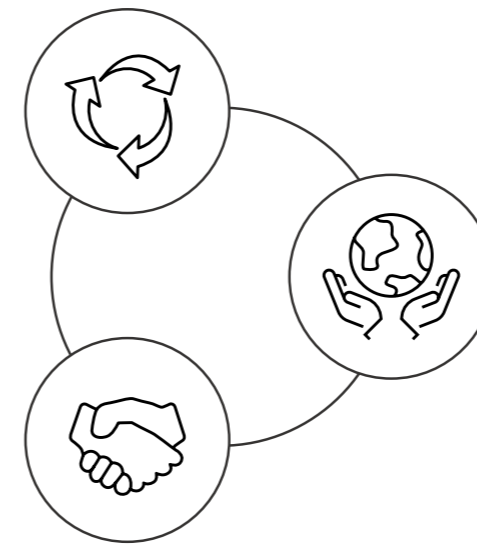
Minimising their environmental footprint throughout their entire life cycle.

Zero waste to landfill

Keeping our materials in use and out of landfill.

Our 3 areas of focus:

How we want to go from long life and lightweight to light impact and circular by design.



Circular design

Designing our materials as a modular system that is easy to dismantle, repair and rebuild – making sure they can be reused and recycled over and over again.

Light-impact construction

Reducing our footprint across the value chain to create materials that are built to be light-impact.

Radical collaboration for lasting change

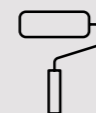
Breaking down industry silos to eliminate the total footprint of our materials – not just in production but throughout their entire life cycle.

The circular potential of fibre cement cladding

Made of water, Portland cement, cellulose and natural minerals, our materials are the perfect building blocks for a circular construction industry.



Recyclable



Low maintenance



Lightweight



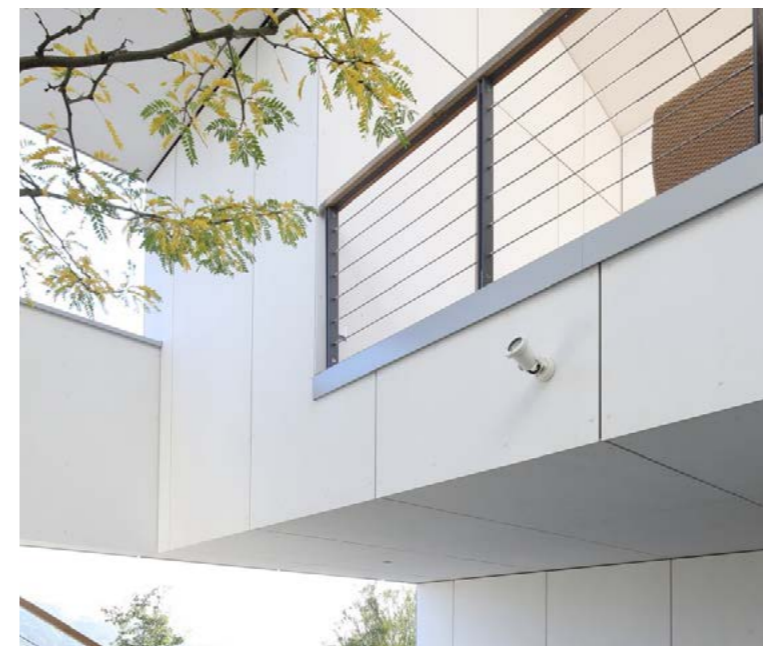
Low material usage/m²



Durable (+50 years)



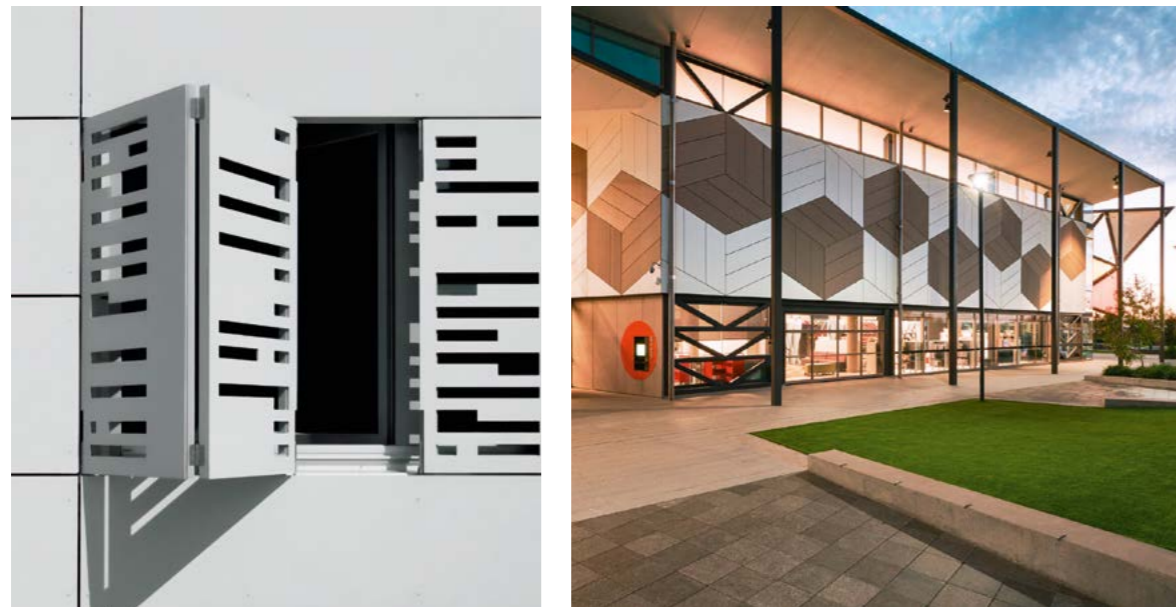
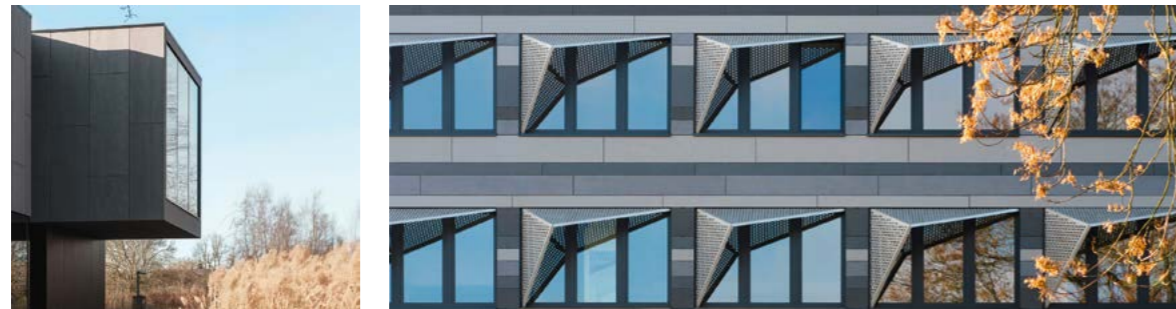
Modular



180 grad Architekten, Heerbrugg, Switzerland

Five compelling reasons to opt for EQUITONE rainscreen facade solutions

Discover why EQUITONE is your premier partner for innovative ventilated facade projects. From enduring durability to unmatched design flexibility, expert services, sustainability, and safety, each aspect reflects a commitment to responsible excellence, transforming your architectural aspirations into enduring realities.



Arch.: Astrid Bornheim, Berlin, Germany



Durability

Designed for strength and reliability, EQUITONE panels, seamlessly installed on the facade using a rear-ventilated curtain system, offer:

- > Over 50 years of longevity
- > Anti-graffiti protection*
- > Resistance to extreme temperatures and frost
- > Exceptional water resistance
- > Chemical resistance



Sustainability

EQUITONE takes the lead in environmental excellence, offering a sustainable framework that will contribute to the success of your future projects:

- > Cradle to Cradle Certified® Bronze**
- > 100% recyclable
- > Low material usage/m²
- > Modular design
- > Lightweight construction
- > Ease of disassembly
- > Low maintenance
- > No harmful gas emissions



Design flexibility

Empower your design journey with EQUITONE's flexible solutions:

- > Customizable sizes and shapes
- > Perforation, milling, and printing options
- > Customised prints***
- > Accommodating special applications, including curved walls, roofs, interiors, and brise soleil
- > Vertical, horizontal, or angled layouts
- > Random or staggered patterns



Expert services

Ease through your daily challenges at every stage of your architectural project with the expert services offered by EQUITONE:

- > Over 120 years of experience
- > Expert consultations available at every project stage
- > Access to online technical resources
- > BIM object support
- > Regular workshops with architects to enhance your experience



Safety

Experience peace of mind and unparalleled safety with EQUITONE, where every detail is crafted to meet and exceed the highest industry standards:

- > EN 13501 fire reaction standard at A2-s1,d0 level
- > EN 12467 Class 4 strength classification
- > No harmful gas emissions

* Applicable to: natura PRO, pictura and inspira.

** Applicable to: natura, natura PRO, tectiva, lunara, linea, textura, pictura.

*** Applicable to: inspira.

Empowering your creativity

From the material's rawest expression to your own inspiration, your only limit is your imagination.

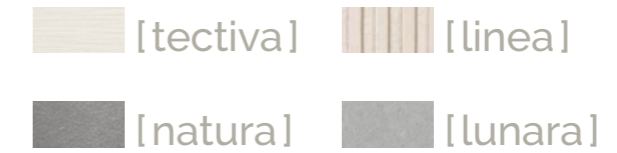
EQUITONE range begins with the grey and subtle authenticity of two natural fibre cement materials, Tectiva and Natura. It continues with progressive degrees of mechanical surface modifications in Linea and Lunara. (The Minerals)

Next, the Pictura, Coloura and Textura subsets bring a range of colours to your façade designs. (The Colourfuls)

Finally, the impressions of nature in the Inspira range and artistic graphical surfaces with designs created with architects for architects, offer you endless creative options. (The Graphicals)

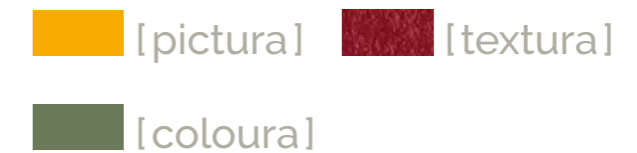
The Minerals

Embrace natural and authentic elegance, explore our earthly mineral-tone panels



The Colourfuls

Awaken your facade: discover our vibrant palette for a colourful and original aesthetic



The Graphicals

Dive into a world of unlimited visual. Versatility with wood, rust, concrete, stone and nature-inspired graphic designs



The Minerals



EQUITONE [tectiva]

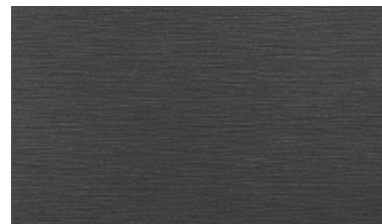
EQUITONE [tectiva] is a through-coloured facade material, characterised by a sanded surface. Every panel is unique, strongly expressing the raw texture of the core fibre cement material.

Touch: Fine sanding lines.

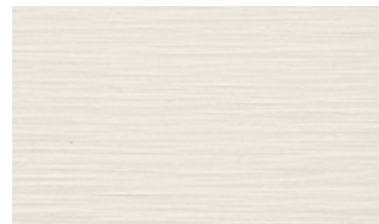
Visual: Dry, lively, dynamic, with naturally occurring hues within the material.

Thickness	Width	Lengths
8 mm	1220 mm	2500 - 3050 mm

AVAILABLE IN 9 COLOURS



TE85



TE90



TE30



TE20



TE00



TE40



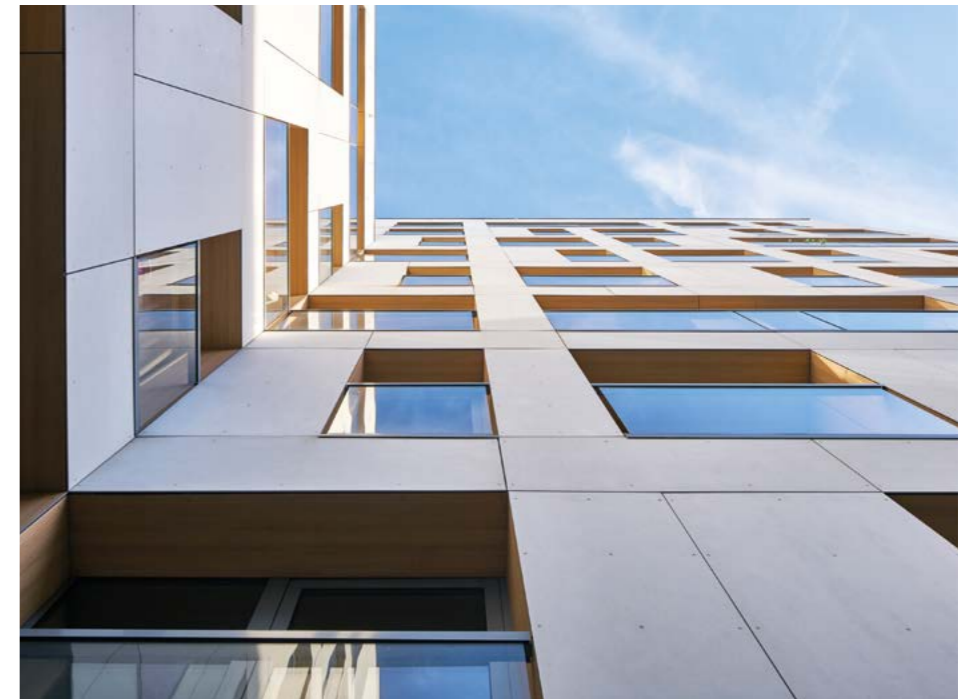
TE15



TE10



TE60



JEMS Architekci, Warsaw, Poland



STUDIOWORKERS, José and Isabel Machado, Espinho, Portugal



ARKit

EQUITONE [natura]

EQUITONE [natura] is a through-coloured facade material. It has a sleek and refined surface with visible fibres randomly distributed throughout. Optional Natura PRO finish is also available with a graffiti protection and is particularly scratch-resistant.

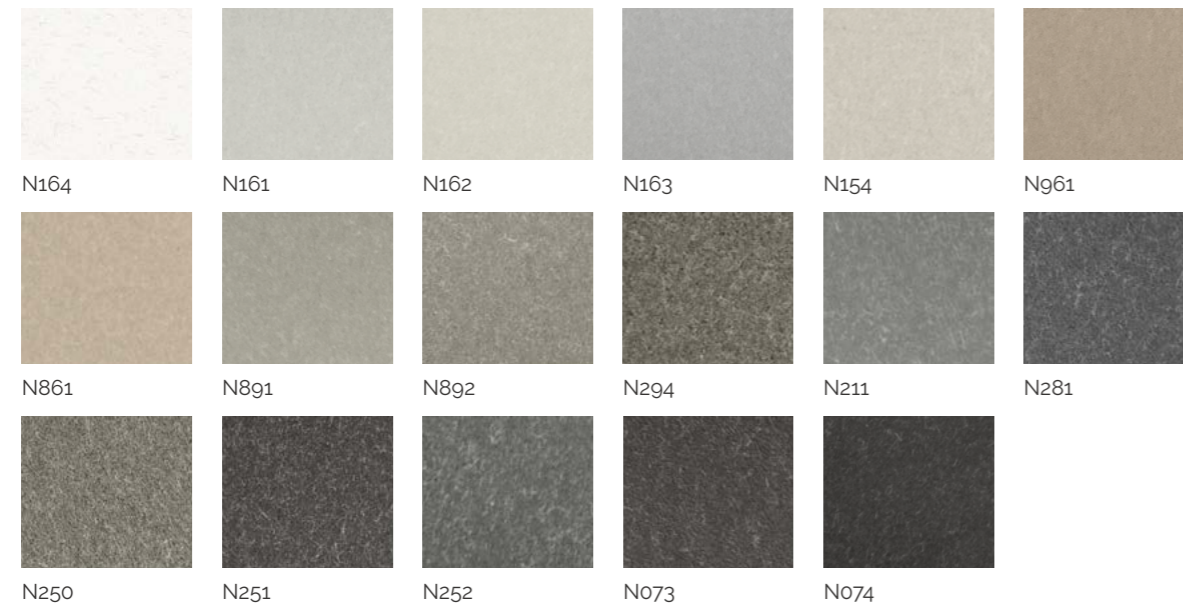
Touch: Matt, silk, smooth surface finish.

Visual: Fibres distributed randomly like the Milky Way, refined, precious.

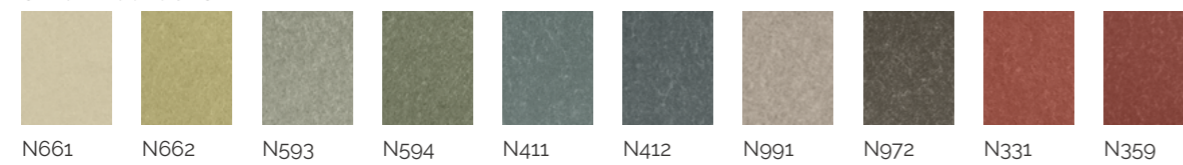
Thickness	Width	Lengths
8 - 12 mm	1250 mm	2500 - 3100 mm

AVAILABLE IN 27 COLOURS

THROUGH-COLOURED



SPECIAL COLOURS



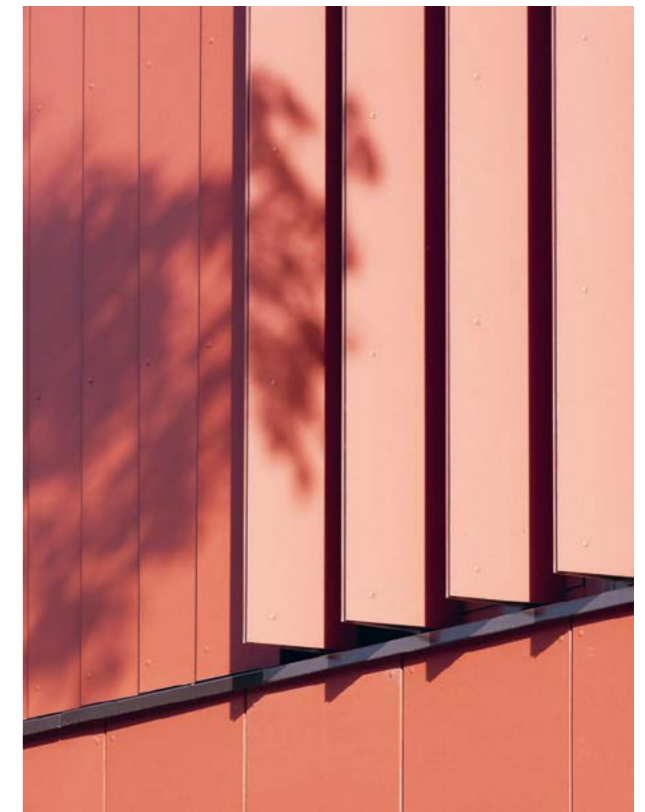
Other colours available on request, subject to minimum order quantities.



Delugan & Meissl Architects



Spaces architects and urban planners gmbh,
Munich



foundation 5+ architekten BDA, Germany; Foitzik Krebs Spies Partnerschaft mbB;
SPRENGWERK, Architektur und Sanierung

EQUITONE [linea]

EQUITONE [linea] is a unique 3D shaped, through-coloured facade material that plays with light and shadow. It displays a linear texture that highlights the raw inner texture of the core fibre cement material.

Touch: Structured, relief, depth.

Visual: Different, playful, lots of possibilities, changes depending on the point of view.

Thickness	Width	Lengths
10 mm	1220 mm	2500 - 3050 mm

AVAILABLE IN 9 COLOURS



LT85



LT90



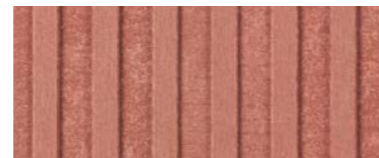
LT30



LT20



LT00



LT40



LT15



LT10



LT60

LIGHT AND SHADOW



8h00



9h00



10h00



11h00



12h00



Studio Weave, London



LAB5



Kęstutis Kisielius



Agence MW architectes D. P. L. G.



Santos-Gaia Arquitectos

EQUITONE [lunara]

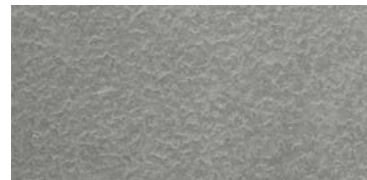
EQUITONE [lunara] is a through-coloured fibre cement panel with a surface resembling a lunar landscape. Each panel is unique in terms of its colour, texture and surface, with a pattern that is not repeated.

Touch: Rough, unpolished fibre cement surface with delicate linen touch.

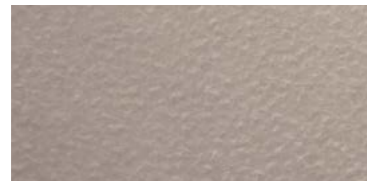
Visual: Expressive, natural, unique.

Thickness	Width	Lengths
10 mm	1220 mm	2500 - 3050 mm

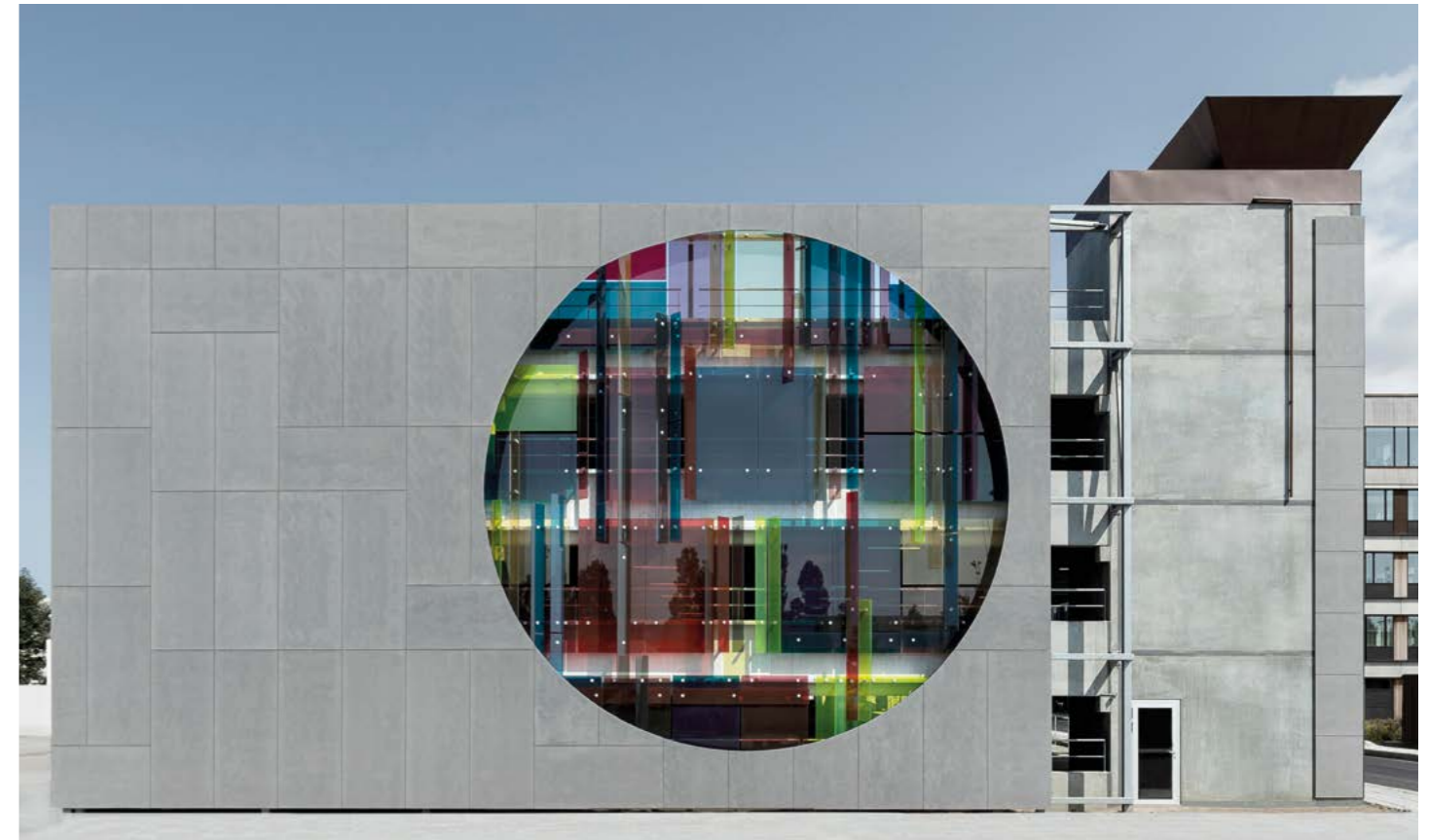
AVAILABLE IN 2 COLOURS



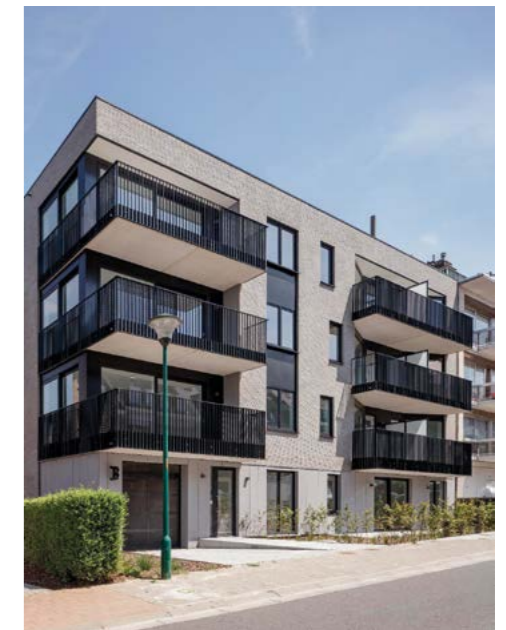
LA20



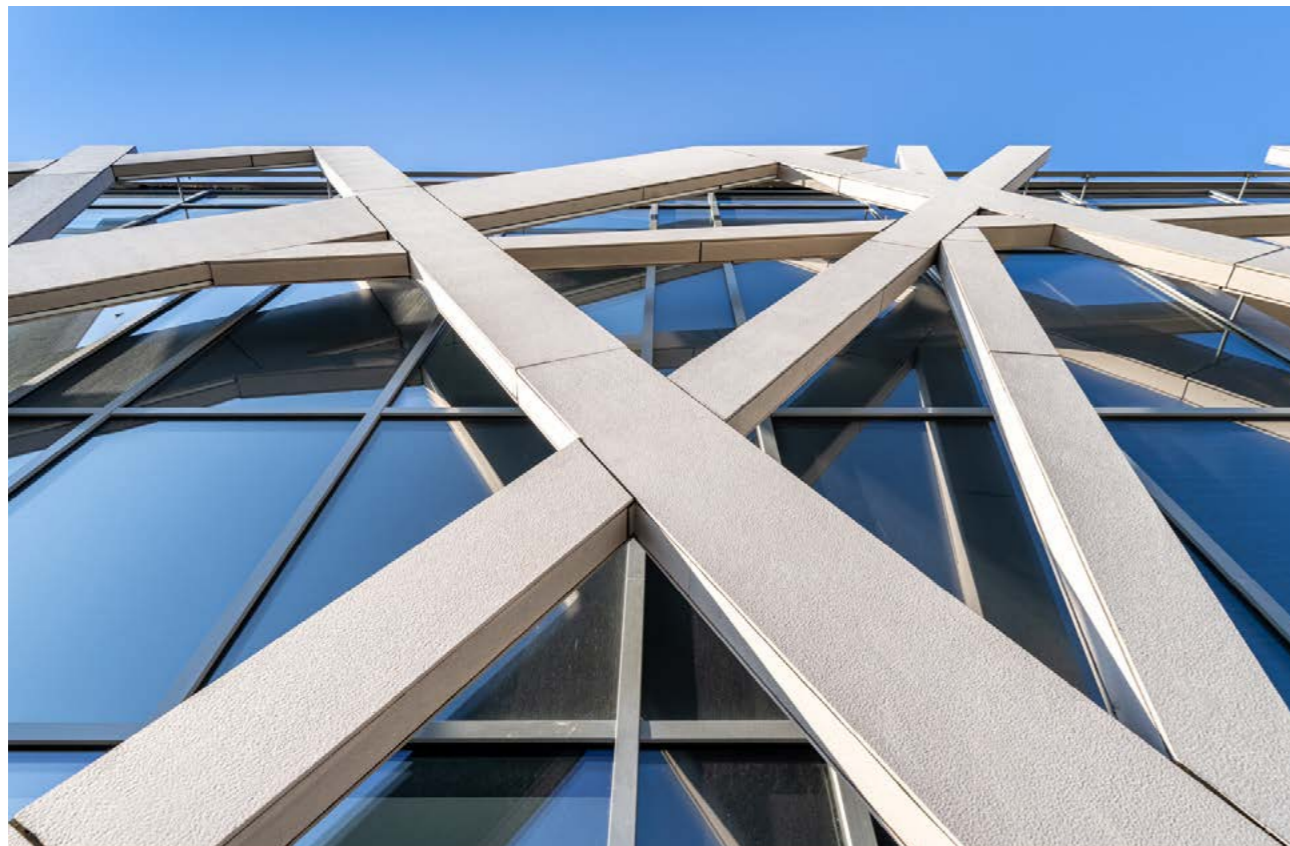
LA60



Kirstine Roepstorff



una|a- Urban Nation Architects



CÉH Zrt., MATA-DÓR Architektúra kft. / Bánszky Szabolcs

The Colourfuls



ÁRTER Architects

EQUITONE [pictura]

EQUITONE [pictura] is a fibre cement facade material with an ultra matt architectural finish. Thousands of custom-matched matt project colours are available on request.

Touch: Smooth, matt, with anti-graffiti protection.

Visual: Classic, brings colourful accents in the facade.

Thickness	Width	Lengths
8 - 12 mm	1250 mm	2500 - 3100 mm

AVAILABLE IN 20 STANDARD COLOURS

				
PW141	PW841	PG542	PG842	PG641
				
PG243	PG843	PG546	PG545	PG544
				
PG241	PG844	PG444	PG443	PG442
				
PA041	PA944	PG342	PG341	PG742

Other colours on request, subject to minimum order quantities.



Jo Coenen



mvarchitekt + starkearchitektur, Köln

TKD Architects

EQUITONE [coloura]

EQUITONE [coloura] is a high-density fibre cement facade material with a coloured double layer PU-acrylic coating.

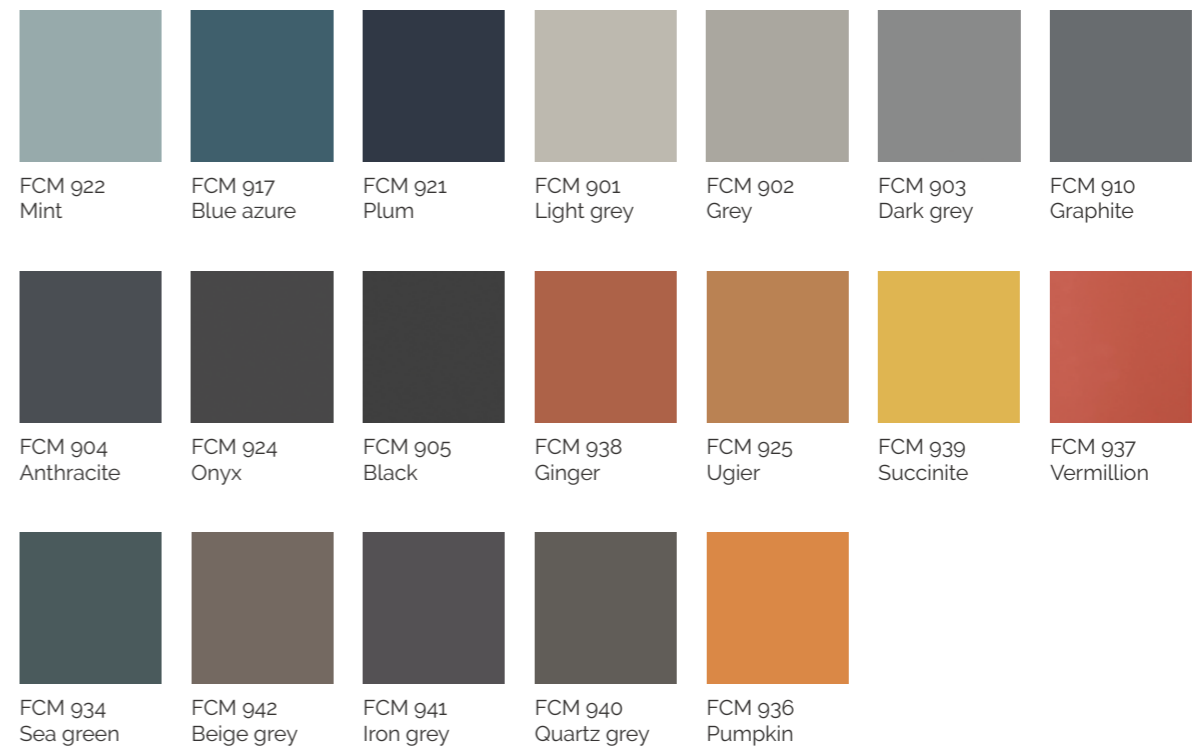
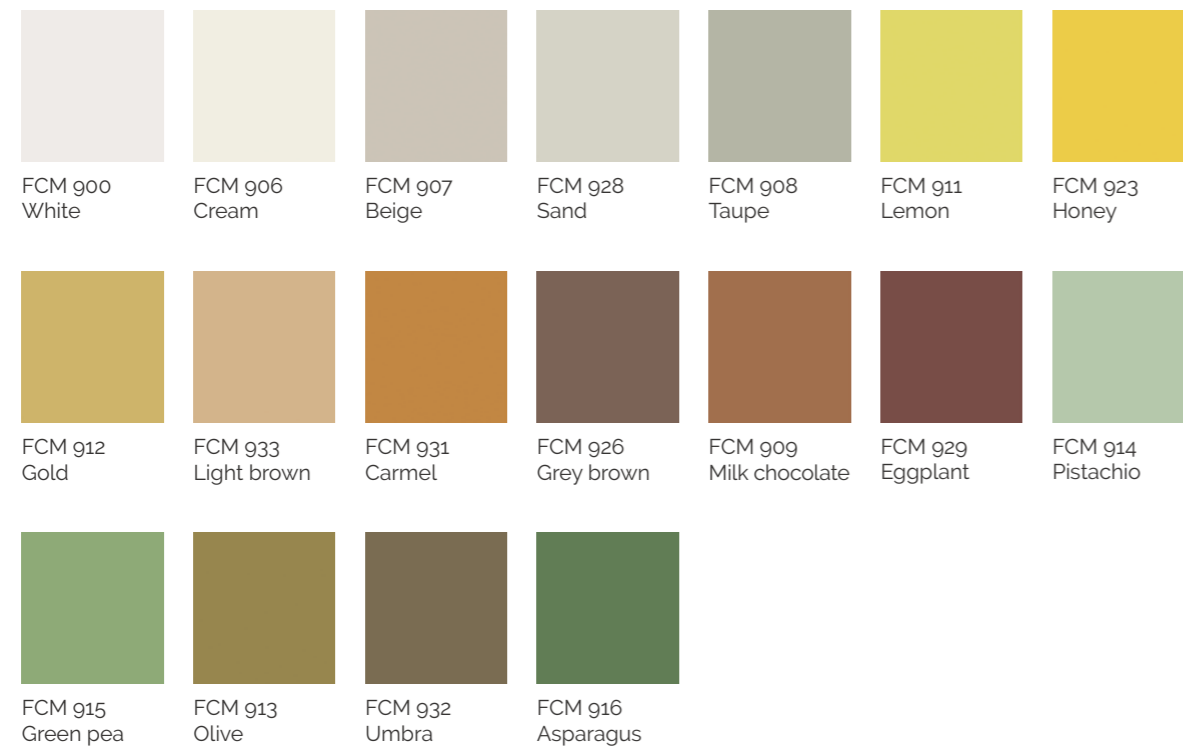
Touch: Smooth, hard, matt.

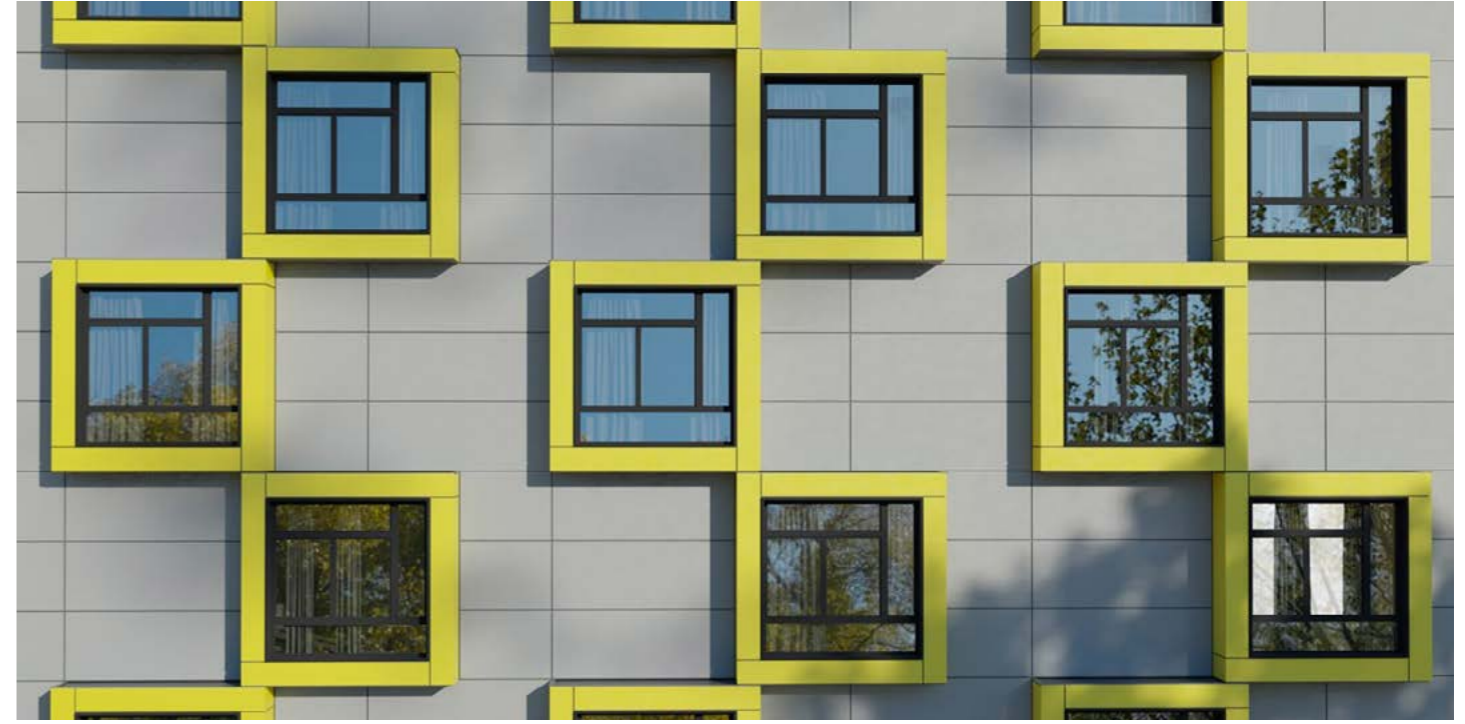
Visual: brings colourful accents in the façade.

Thickness	Width	Lengths
8 mm	1250 mm	2500 - 3100 mm



AVAILABLE IN 37 STANDARD COLOURS





EQUITONE [textura]

EQUITONE [textura] is a through-coloured fibre cement material, with a special coating featuring UV-resistant pigments that ensure vibrant colours permanently. The uniform surface guarantees a long-lasting clean look.

Touch: fine-grained surface.

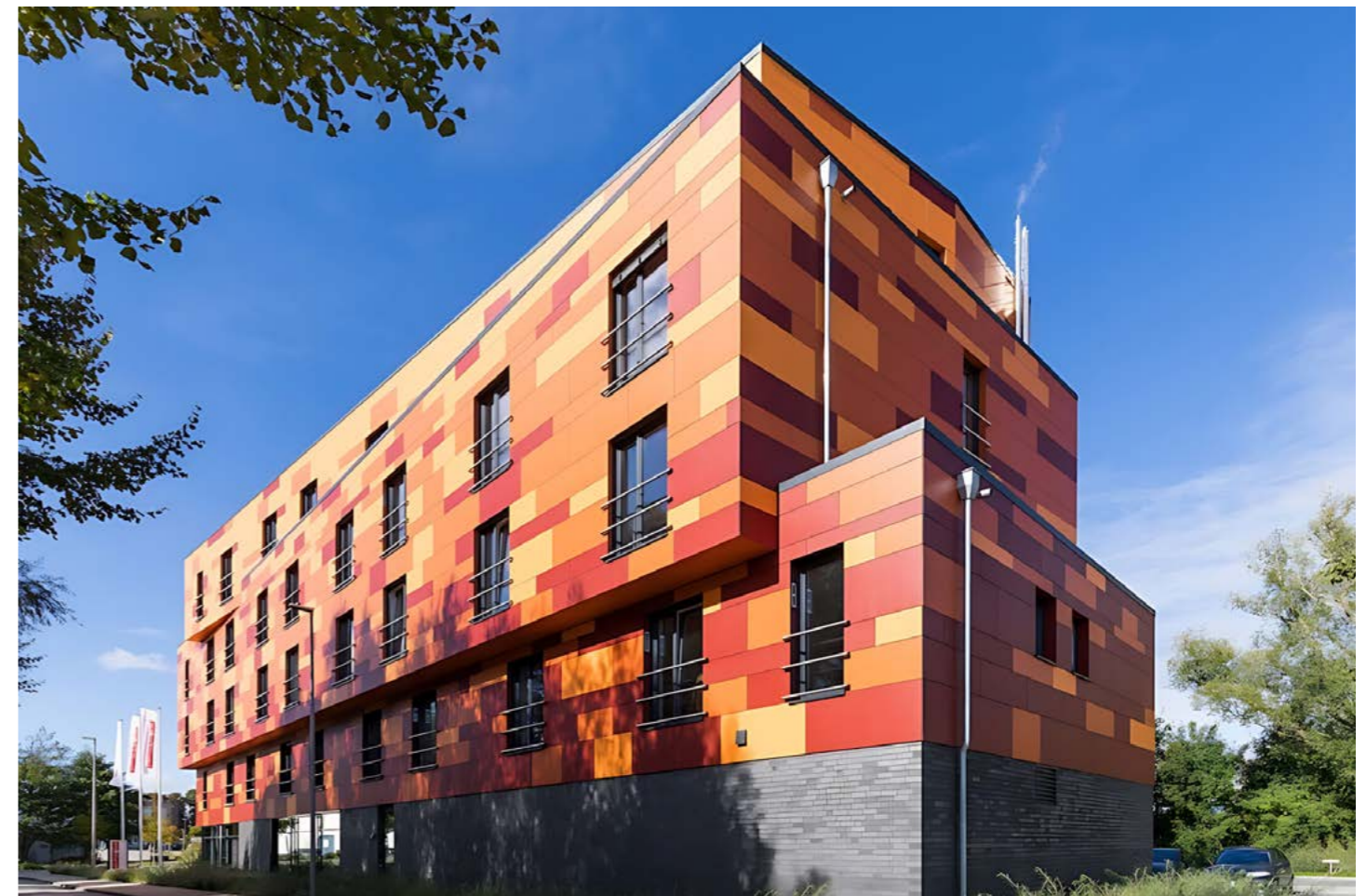
Visual: satin, pearl effect.

Thickness	Width	Lengths
8 - 12 mm	1250mm	2500 - 3100 mm

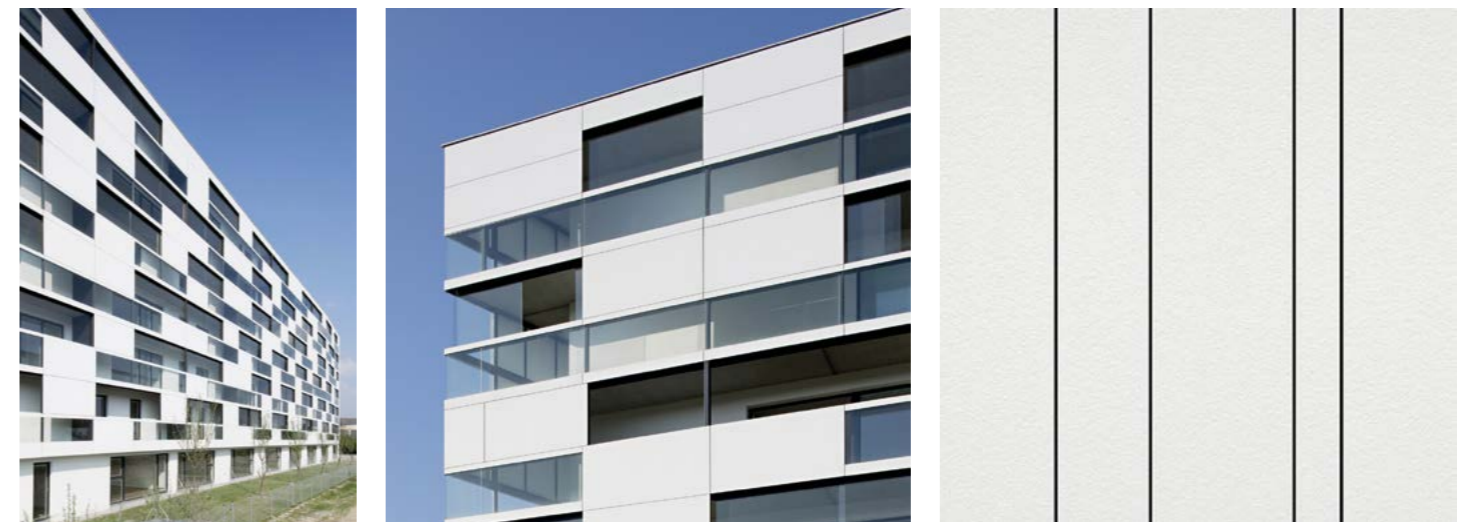
AVAILABLE IN 20 STANDARD COLOURS



Other colours on request, subject to minimum order quantities.

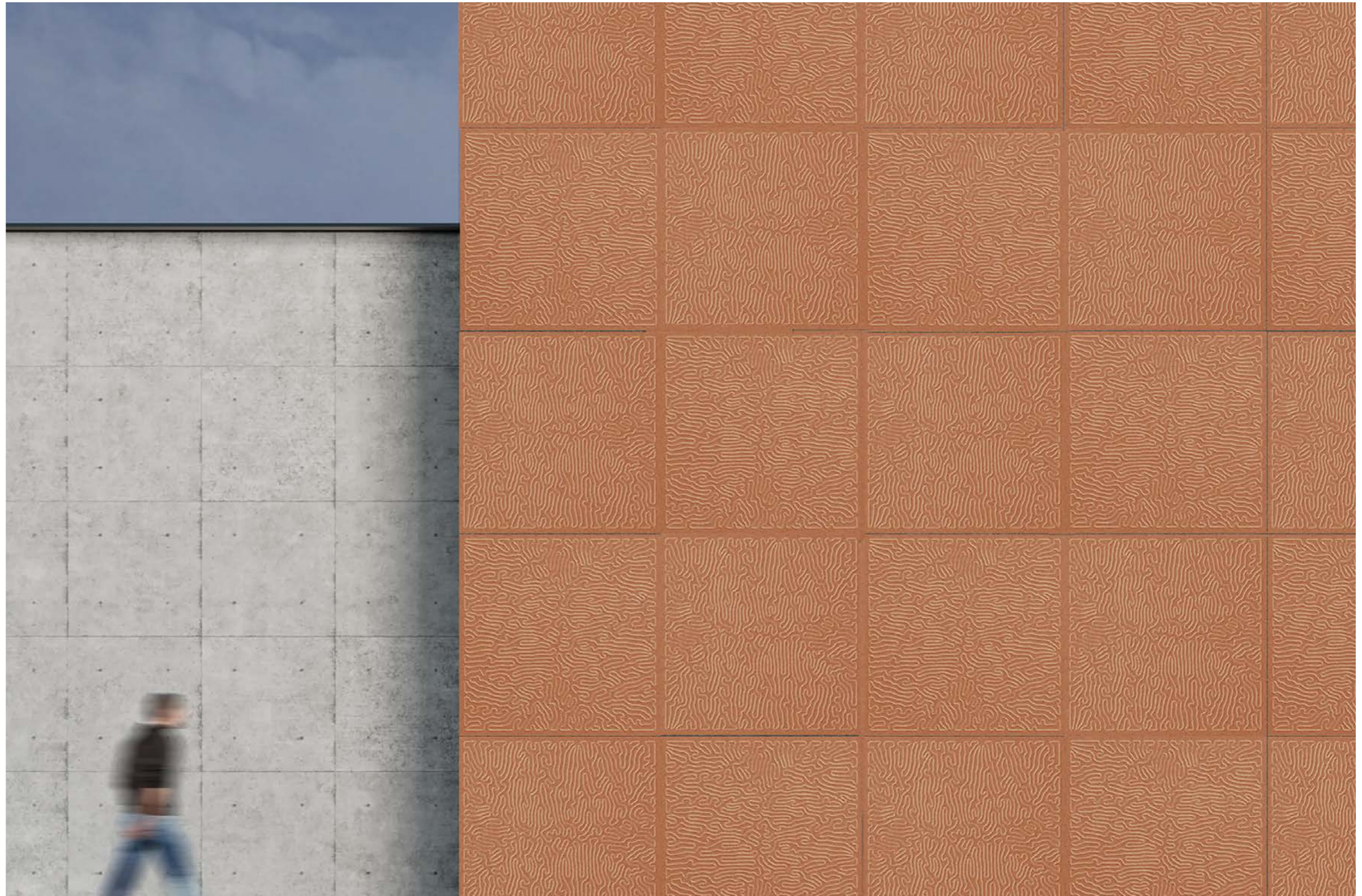


HEP Architekten GmbH



Delugan Meissl Associated Architects, Wien

The Graphicals



EQUITONE [inspira]

Materic collection

EQUITONE [inspira] is a high-density fibre cement panel featuring a digitally printed surface coated with a UV-resistant finish. This material offers a durable, dirt-resistant finishing with high abrasion resistance and a permanent anti-graffiti surface.

Touch: smooth, hard, matt.

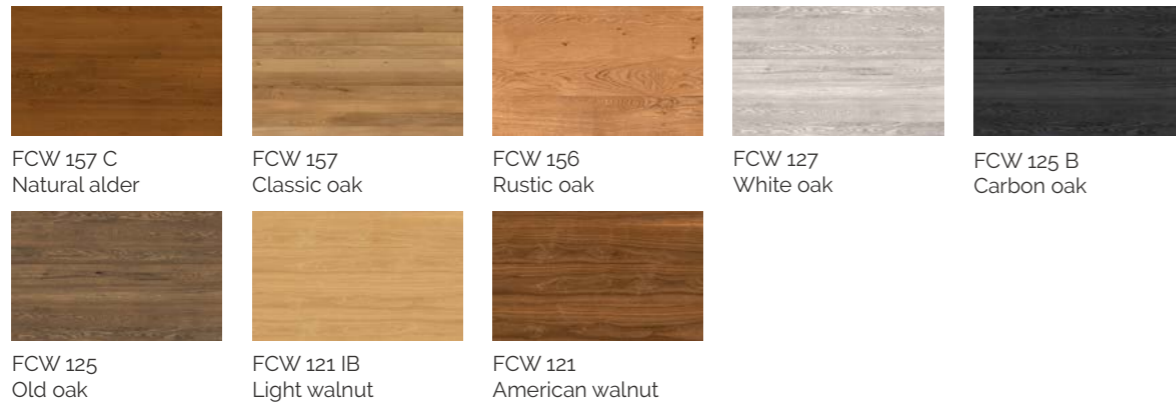
Visual: modern, elegant, with materic effect.

Thickness	Width	Lengths
8 mm	1250 mm	2500 - 3100 mm

Materic Collection is available in 4 different decors with Wood, Rust, Stone and Concrete effects.



Wood



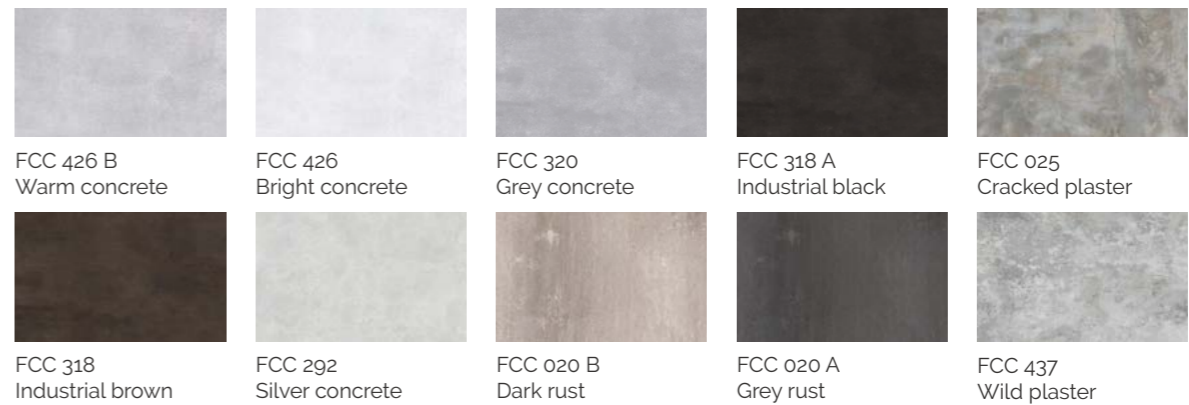
Rust



Stone



Concrete





EQUITONE [inspira]

Artistic Collection

EQUITONE [inspira] is a high-density fibre cement panel featuring a digitally printed surface coated with a UV-resistant finish. This material offers a durable, dirt-resistant finishing with high abrasion resistance and a permanent anti-graffiti surface.

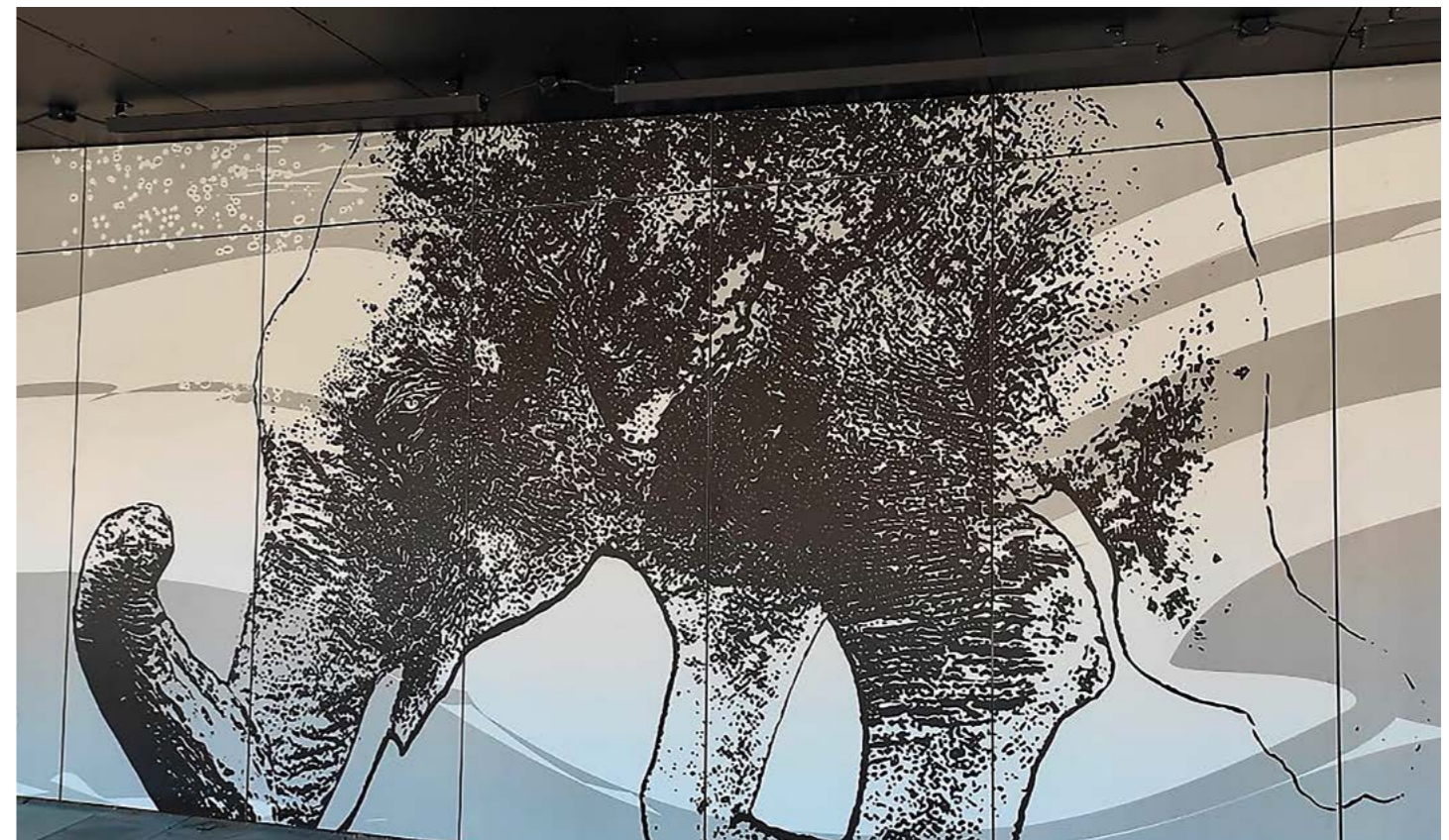
Touch: smooth, hard, matt.

Visual: modern, elegant, with artistic or customised graphics.

Thickness	Width	Lengths
8 mm	1250 mm	2500 - 3100 mm

Artistic Collection is available with bespoke decors and personalized prints on request. Thanks to a special digital printing technology, any kind of image, color, pattern or design (in high resolution) can be accurately reproduced on the panels.

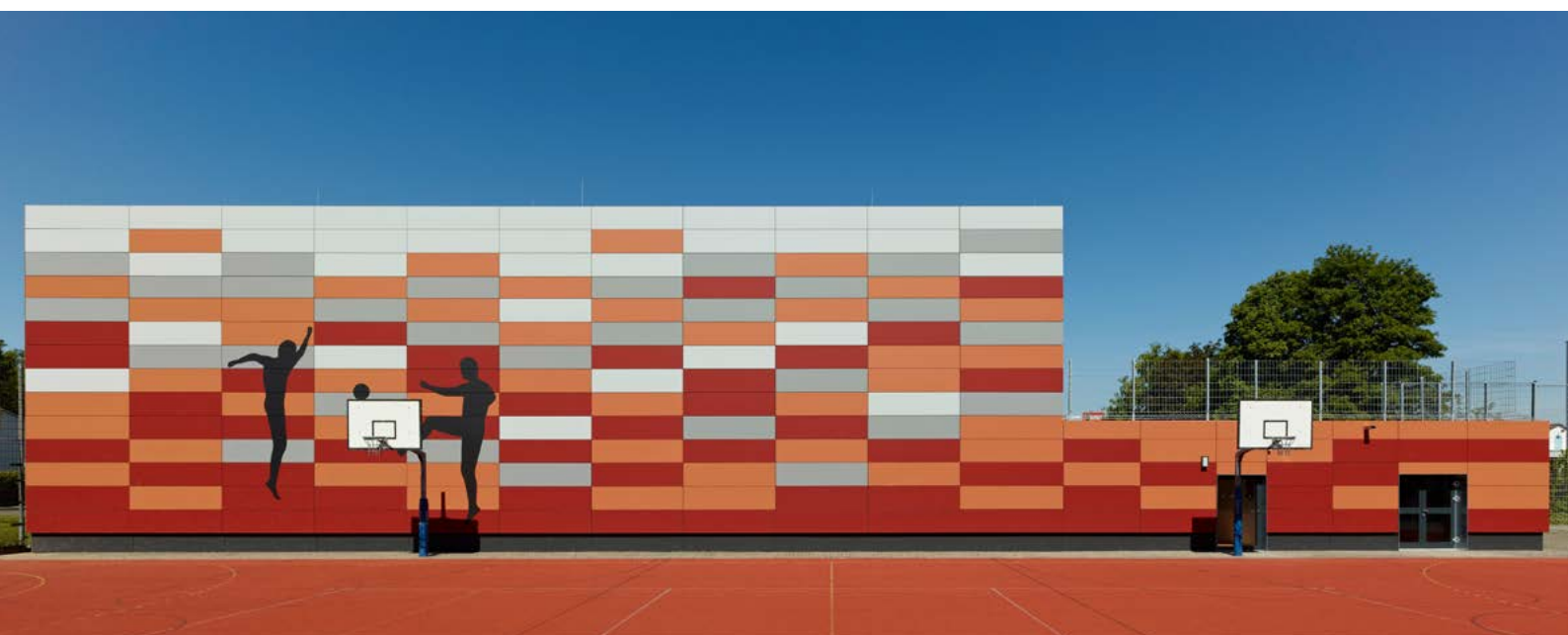
Get inspired by this series of nature-inspired graphics created for EQUITONE by architects to realise your own customised design and create unique and original facades.



Dorota Szlachcic



 **EQUITONE**®
Fibre cement facade materials



equitone.com

Follow @EQUITONE Export



Euro Panels Overseas N.V.

Bormstraat 24
2830 Tiselt - Belgium

info.europanel@etexgroup.com